

# en **Dali Driver Installation Guide** fr **Dali Driver Guide d'installation**

## en **WARNING:**

- THE PRODUCT MUST BE INSTALLED BY A QUALIFIED ELECTRICIAN;
- INSTALLATION INPUT WIRE SPECIFICATIONS: 1.5-2.5mm<sup>2</sup> ;
- INSTALLATION OUTPUT WIRE SPECIFICATIONS: 0.5-2.5mm<sup>2</sup> ;

## fr **AVERTISSEMENT :**

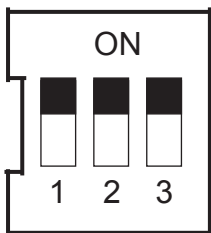
- LE PRODUIT DOIT ÊTRE INSTALLÉ PAR UN ÉLECTRICIEN QUALIFIÉ;
- SPÉCIFICATIONS DU CÂBLE D'ENTRÉE: 1.5-2.5mm<sup>2</sup> ;
- SPÉCIFICATIONS DU CÂBLE D'ENTRÉE: 0.5-2.5mm<sup>2</sup> ;



## en **Product Specification**

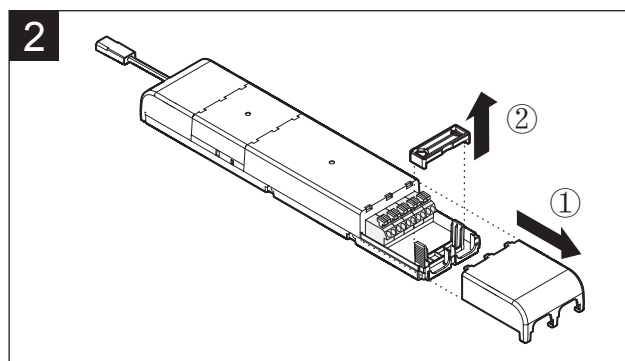
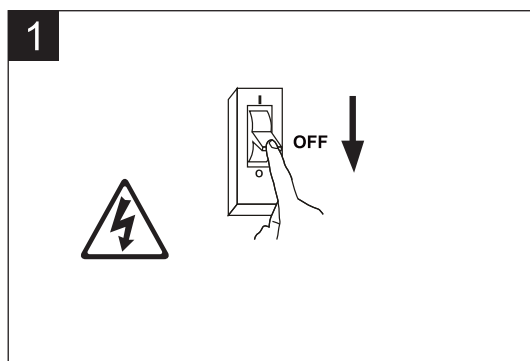
## fr **Référence des produits**

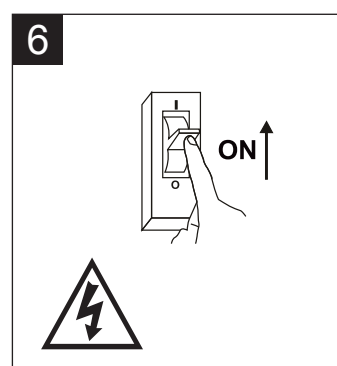
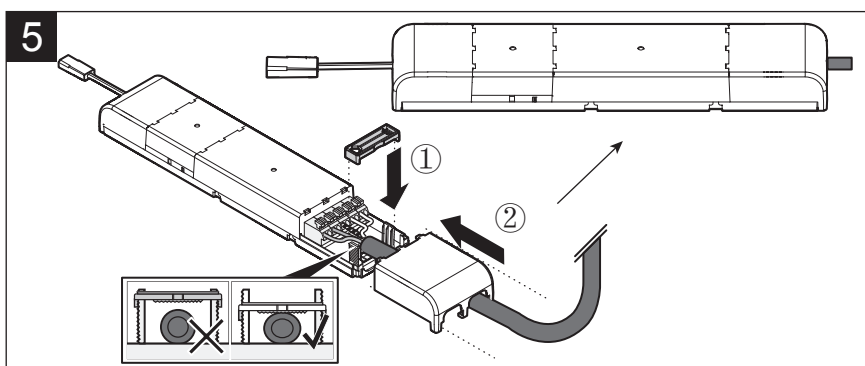
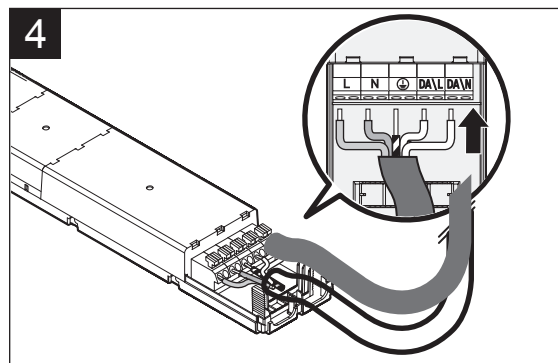
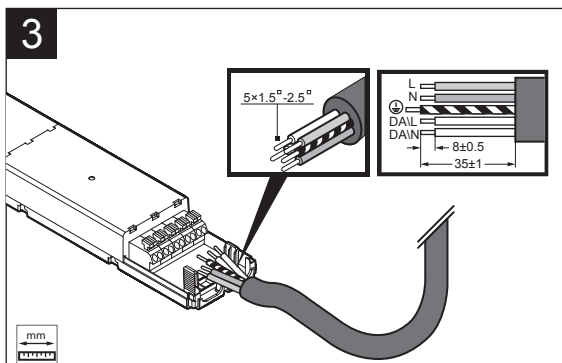
Model RÉF.	Size(mm) Taille	Ta(°C) Temperature	Weight(kg) Poids
ECD44WCC0500-1050 DL1A	303.4*64*32	45	0.31

DIP setting						
Output current setting	PIN1	PIN2	PIN3	Output current	Voltage range	Max. output power
	ON	ON	ON	1050 mA	30 V-42 V	44 W
	OFF	ON	ON	950 mA	30 V-42 V	40 W
	ON	OFF	ON	850 mA	30 V-42 V	36 W
	ON	ON	OFF	800 mA	30 V-42 V	34 W
	OFF	OFF	ON	750 mA	30 V-42 V	32 W
	OFF	ON	OFF	700 mA	30 V-42 V	30 W
	ON	OFF	OFF	650 mA	30 V-42 V	28 W
	OFF	OFF	OFF	500 mA	30 V-42 V	21 W

## en **Driver installation**

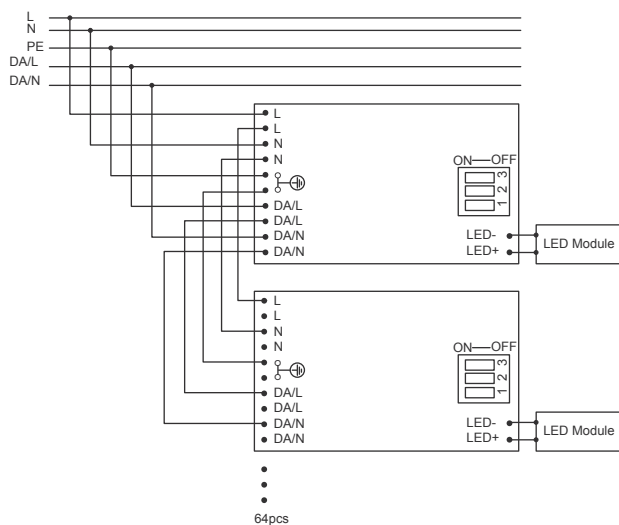
## fr **Installation de Driver**





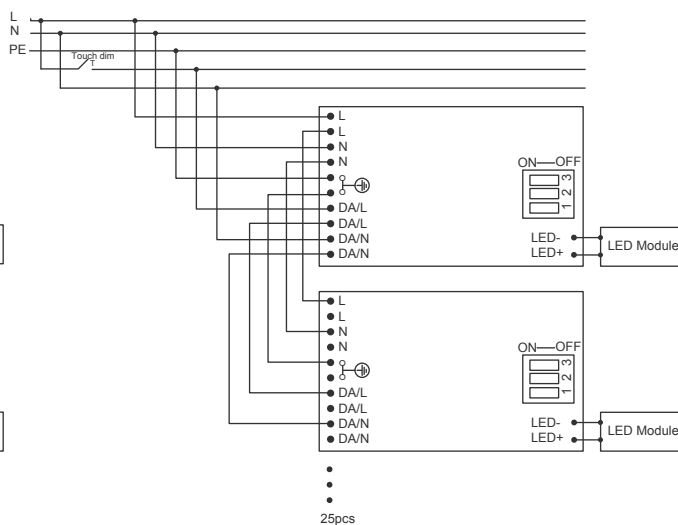
## Installation circuit diagram

220-240V  
0/50/60/100Hz



The Max length between the DALI device and the drivers is 300m.  
The Max number of connections to driver is 64 pcs.

220-240V  
0/50/60/100Hz



For parallel or series connection:  
The Max length between Touch Dim and the driver is 25m.  
The Max number of connections to driver is 25 pcs.

Electric insulation	DALI	Output	PE	Mains
DALI	X	Supplementary	Basic	Basic
Output	Supplementary	X	Basic	Reinforced
PE	Basic	Basic	X	Basic
Mains	Basic	Reinforced	Basic	X

CEOTIS ECLAIRAGE  
23 rue Lavoisier, 75008 Paris  
email: [contact@ceotis.fr](mailto:contact@ceotis.fr)  
Tel: +33 (0) 1 43 87 52 04